

PRODUCT INFORMATION PACKET



Model No:
Catalog No: STG1302A
MODEL-PFHP-56FR
Induction Motors



Regal and Century are trademarks of Regal Beloit Corporation or one of its affiliated companies.
©2019 Regal Beloit Corporation, All Rights Reserved. MC017097E





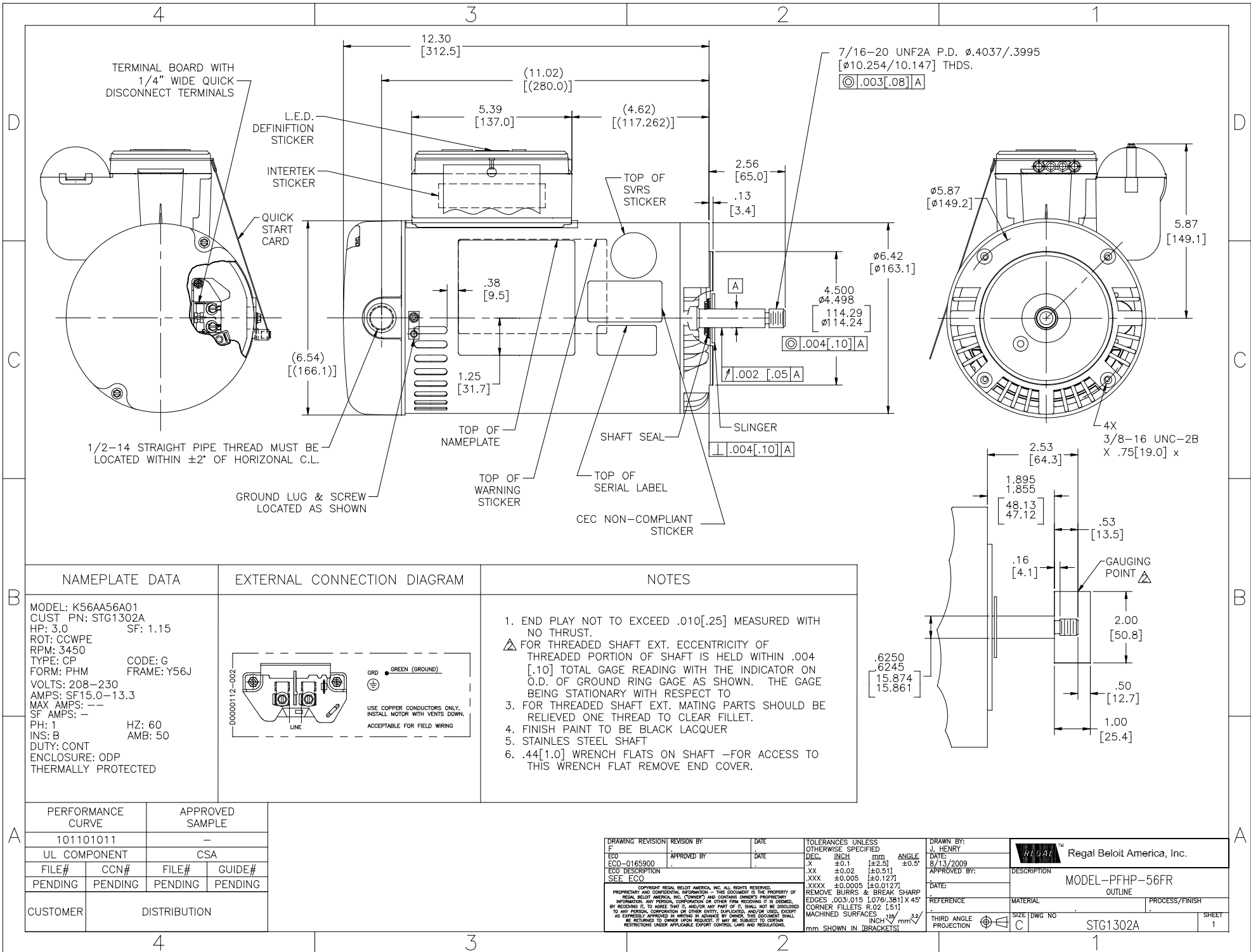
Nameplate Specifications

Output HP	3.0 HP	Output KW	2.2 kW
Frequency	60 Hz	Voltage	208-230 V
Current	SF 15.0-13.3 A	Speed	3450 RPM
Service Factor	1.15	Phase	1
Duty	Continuous	Insulation Class	B
Frame	Y56J	Enclosure	Drip Proof
Overload Protector	Thermally Protected	Ambient Temperature	50 °C
UL	Recognized	CSA	Y

Technical Specifications

Electrical Type	Capacitor Start, Capacitor Run, Single Or Dual	Starting Method	Across The Line
Poles	2	Rotation	Counterclockwise Pump End
Mounting	C Face	Motor Orientation	Horizontal
Drive End Bearing	Ball Brg	Opp Drive End Bearing	Ball
Frame Material	Rolled Steel	Shaft Type	Threaded
Overall Length	14.86 in	Frame Length	9.25 in
Shaft Diameter	0.625 in	Shaft Extension	2.56 in
Outline Drawing	STG1302A-S01	Connection Diagram	D0000112-002

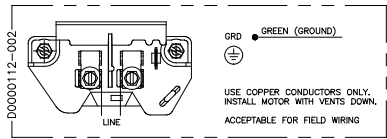
This is an uncontrolled document once printed or downloaded and is subject to change without notice. Date Created: 10/17/2019



NAMEPLATE DATA

MODEL: K56AA56A01
 CUST_PN: STG1302A
 HP: 3.0 SF: 1.15
 ROT: CCWPE
 RPM: 3450
 TYPE: CP
 FORM: PHM CODE: G
 FRAME: Y56J
 VOLTS: 208-230
 AMPS: SF15.0-13.3
 MAX AMPS: ---
 SF AMPS: ---
 PH: 1 HZ: 60
 INS: B AMB: 50
 DUTY: CONT
 ENCLOSURE: ODP
 THERMALLY PROTECTED

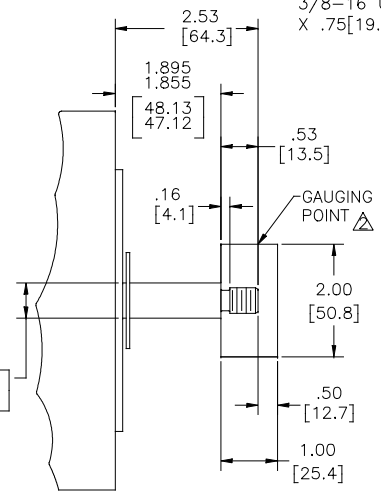
EXTERNAL CONNECTION DIAGRAM



NOTES

1. END PLAY NOT TO EXCEED .010[.25] MEASURED WITH NO THRUST.
2. Δ FOR THREADED SHAFT EXT. ECCENTRICITY OF THREADED PORTION OF SHAFT IS HELD WITHIN .004 [.10] TOTAL GAGE READING WITH THE INDICATOR ON O.D. OF GROUND RING GAGE AS SHOWN. THE GAGE BEING STATIONARY WITH RESPECT TO
3. FOR THREADED SHAFT EXT. MATING PARTS SHOULD BE RELIEVED ONE THREAD TO CLEAR FILLET.
4. FINISH PAINT TO BE BLACK LACQUER
5. STAINLESS STEEL SHAFT
6. .44[1.0] WRENCH FLATS ON SHAFT -FOR ACCESS TO THIS WRENCH FLAT REMOVE END COVER.

.6250
 .6245
 15.874
 15.861



PERFORMANCE CURVE		APPROVED SAMPLE	
101101011		-	
UL COMPONENT		CSA	
FILE#	CCN#	FILE#	GUIDE#
PENDING	PENDING	PENDING	PENDING
CUSTOMER	DISTRIBUTION		

DRAWING REVISION/REVISION BY	DATE	TOLERANCES UNLESS OTHERWISE SPECIFIED	DRAWN BY:	Regal Beloit America, Inc.	
F		DEC. INCH mm ANGLE	J. HENRY		
ECO -0165900	APPROVED BY	.XX \pm 0.1 [2.5] \pm 0.5	DATE:	8/13/2009	
SEE ECO		.XX \pm 0.02 [0.51] \pm 0.127	APPROVED BY:		
COPYRIGHT REGAL BELOIT AMERICA, INC. ALL RIGHTS RESERVED. PROPRIETARY AND CONFIDENTIAL INFORMATION - THIS DOCUMENT IS THE PROPERTY OF REGAL BELOIT AMERICA, INC. (OWNER) AND CONTAINS OWNER'S PROPRIETARY INFORMATION. ANY REPRODUCTION OR OTHER USE WITHOUT THE WRITTEN PERMISSION OF REGAL BELOIT AMERICA, INC. IS STRICTLY PROHIBITED. BY RECEIVING IT, TO AGREE THAT IT, AND/OR ANY PART OF IT, SHALL NOT BE DISCLOSED TO ANY PERSON, CORPORATION OR OTHER ENTITY, EMPLOYED AND/OR USED SOLELY AS EXPRESSLY APPROVED IN WRITING BY ADVANCE BY OWNER. THIS DOCUMENT SHALL BE RETURNED TO OWNER UPON REQUEST. IT MAY BE SUBJECT TO CERTAIN RESTRICTIONS UNDER APPLICABLE EXPORT CONTROL LAWS AND REGULATIONS.		.XXX \pm 0.005 [0.127] \pm 0.0127	DATE:		
		REMOVE BURRS & BREAK SHARP EDGES .003/.015 [0.076/.381] X 45° CORNER FILLETS R.02 [51] MACHINED SURFACES $\text{\textcircled{C}}.003[.08]A$ INCH mm $\text{\textcircled{C}}.004[.10]A$ mm SHOWN IN BRACKETS	REFERENCE:	MATERIAL:	PROCESS/FINISH:
			THIRD ANGLE PROJECTION	SIZE DWG NO	STG1302A
				SHEET	1