

# PRODUCT INFORMATION PACKET



Model No:  
Catalog No: STG1202A  
MODEL-PFHP-48FR  
Induction Motors



Regal and Century are trademarks of Regal Beloit Corporation or one of its affiliated companies.  
©2019 Regal Beloit Corporation, All Rights Reserved. MC017097E





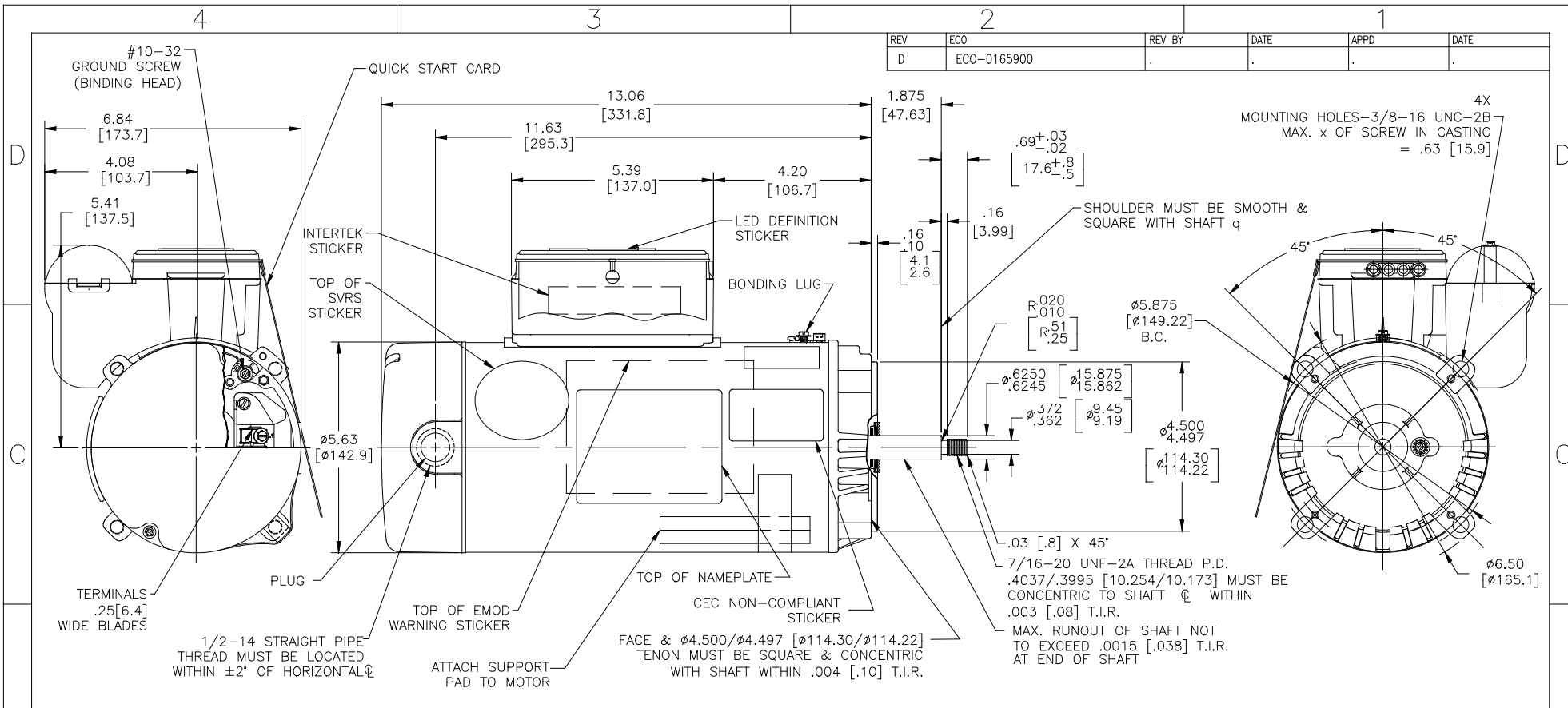
**Nameplate Specifications**

Output HP	<b>2.0 HP</b>	Output KW	<b>1.5 kW</b>
Frequency	<b>60 Hz</b>	Voltage	<b>208-230 V</b>
Current	<b>12.6-11.4 A</b>	Speed	<b>3450 RPM</b>
Service Factor	<b>1.32</b>	Phase	<b>1</b>
Duty	<b>Continuous</b>	Insulation Class	<b>B</b>
Frame	<b>56J</b>	Enclosure	<b>Open Drip Proof</b>
Overload Protector	<b>Automatic</b>	Ambient Temperature	<b>50 °C</b>
UL	<b>Recognized</b>	CSA	<b>Y</b>

**Technical Specifications**

Electrical Type	<b>Capacitor Start Capacitor Run</b>	Poles	<b>2</b>
Rotation	<b>Counterclockwise Pump End</b>	Mounting	<b>C Face</b>
Motor Orientation	<b>Horizontal</b>	Drive End Bearing	<b>BALL</b>
Opp Drive End Bearing	<b>BALL</b>	Frame Material	<b>Rolled Steel</b>
Shaft Type	<b>Threaded</b>	Overall Length	<b>15.63 in</b>
Frame Length	<b>9.69 in</b>	Shaft Diameter	<b>0.625 in</b>
Shaft Extension	<b>2.56 in</b>		
Outline Drawing	<b>STG1202A-S01</b>	Connection Diagram	<b>627103-007</b>

**This is an uncontrolled document once printed or downloaded and is subject to change without notice. Date Created: 10/19/2019**



NAMEPLATE DATA	EXTERNAL CONNECTION DIAGRAM	NOTES
MODEL: K48AA09A01 CUST PN: STG1202A HP: 2.0 SF: 1.32 ROT: CWLE RPM: 3450 TYPE: UAK CODE: G FORM: FRAME: 56 J VOLTS: 208-230 AMPS: MAX AMPS: 12.6-11.4 SF AMPS: PH: 1 HZ: 60 INS: B AMB: 50°C DUTY: CONT ENCLOSURE: ODP THERMALLY PROTECTED	<p>USE COPPER CONDUCTORS ONLY. INSTALL MOTOR WITH VENTS DOWN. ACCEPTABLE FOR FIELD WIRING</p>	1. FINISH PAINT TO BE SATIN BLACK. 2. .44[11.2] WRENCH FLATS ON SHAFT-FOR ACCESS TO THIS WRENCH FLAT REMOVE END COVER. 3. STAINLESS STEEL SHAFT EXT. 4. LIMITS ON AMPLITUDE OF VIBRATION MEASURED AT BEARING HOUSING = .001.

PERFORMANCE CURVE K48M2W16	APPROVED SAMPLE CSA	GEOMETRIC CHARACTERISTICS & SYMBOLS ▽ FLATNESS / STRAIGHTNESS < ANGLARITY ⊥ PERPENDICULARITY (SQUARENESS) // PARALLELISM ○ ROUNDNESS (CIRCULARITY) ∅ CYLINDRICITY △ PROFILE OF ANY SURFACE ⊖ PROFILE OF ANY LINE ↗ RUNOUT ⊕ TRUE POSITION ⊙ CONCENTRICITY = SYMMETRY ASME Y14.5M 1994	UNLESS OTHERWISE SPECIFIED DIM. TOLERANCES ARE AS FOLLOWS: INCH X XX XXX XXXX mm ±0.5 ±0.13 ±0.013 ANG. ±50 DEG REMOVE BURRS & BREAK SHARP EDGES: INCH .003-.015 mm 0.1-0.4 CORNER FILLETS TO: INCH .020 mm 0.5 MACHINE SURFACES: INCH 125 mm 3.2 METRIC DIMS. SHOWN IN [BRACKETS]	DR BY: JHENRY APPD: 04-02-09 EDS DATE 11-11-2011 FORMAT REV G THIRD ANGLE PROJECTION	DESCRIPTION MODEL-PFHP-48FR OUTLINE STG1202A
UL COMPONENT FILE# CEN# FILE# GUIDE# PENDING PENDING PENDING PENDING	CUSTOMER DIST. SERVICES	CONFIDENTIAL: THIS DRAWING AND ITS INFORMATION ARE THE EXCLUSIVE AND CONFIDENTIAL PROPERTY OF REGAL-BELOIT CORPORATION AND ARE NOT TO BE DISCLOSED, DUPLICATED, DISTRIBUTED OR OTHERWISE USED WITHOUT THE WRITTEN CONSENT OF REGAL-BELOIT CORPORATION. -ALL RIGHTS RESERVED.	SIZE C SCALE NONE	DWG NO SHEET 1	