

PRODUCT INFORMATION PACKET



Model No:
Catalog No: STG1102A
MODEL-PFHP-48FR
Induction Motors



Regal and Century are trademarks of Regal Beloit Corporation or one of its affiliated companies.
©2019 Regal Beloit Corporation, All Rights Reserved. MC017097E





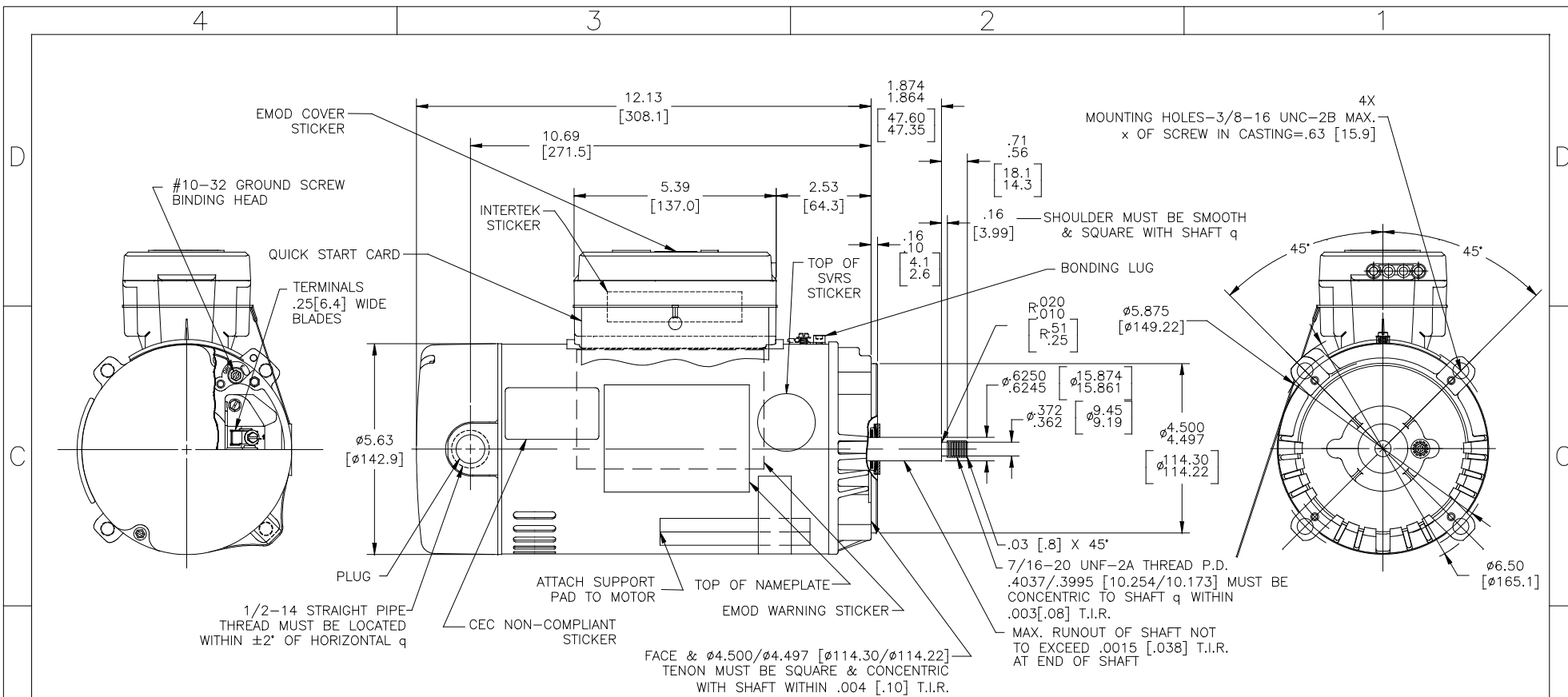
Nameplate Specifications

Output HP	1 HP	Output KW	0.75 kW
Frequency	60 Hz	Voltage	230/115 V
Current	9.3/18.6 A	Speed	3450 RPM
Service Factor	1.5	Phase	1
Duty	Continuous	Insulation Class	B
Frame	56J	Enclosure	Open Drip Proof
Overload Protector	Automatic	Ambient Temperature	50 °C
UL	Recognized	CSA	Y

Technical Specifications

Electrical Type	Cap Start Motor	Poles	2
Rotation	Counterclockwise Pump End	Mounting	C Face
Motor Orientation	Horizontal	Drive End Bearing	BALL
Opp Drive End Bearing	BALL	Frame Material	Rolled Steel
Shaft Type	Threaded	Overall Length	14.50 in
Frame Length	8.75 in	Shaft Diameter	0.625 in
Shaft Extension	2.56 in		
Outline Drawing	STG1102A-S01		

This is an uncontrolled document once printed or downloaded and is subject to change without notice. Date Created: 10/17/2019



NAMEPLATE DATA	EXTERNAL CONNECTION DIAGRAM	NOTES
MODEL: C48AA45A01 CUST PN: STG1102A HP: 1 SF: 1.5 ROT: CCWPE RPM: 3450 TYPE: UAC CODE: L FORM: FRAME: 56 J VOLTS: 230/115 AMPS: MAX AMPS: 9.3/18.6 SF AMPS: PH: 1 HZ: 60 INS: B AMB: 50°C DUTY: CONT ENCLOSURE: ODP THERMALLY PROTECTED		<ol style="list-style-type: none"> 1. FINISH PAINT TO BE SATIN BLACK. 2. .44[11.2] WRENCH FLATS ON SHAFT-FOR ACCESS TO THIS WRENCH FLAT REMOVE END COVER. 3. STAINLESS STEEL SHAFT EXTENSION. 4. LIMITS ON AMPLITUDE OF VIBRATION MEASURED AT BEARING HOUSING = .001[.03]. 5. DUAL VOLTAGE MOTORS ARE TO BE CONNECTED FOR HIGHER VOLTAGE, QUICK VOLTAGE CHANGE DIAL INCLUDED ON THE TERMINAL BOARD.

PERFORMANCE CURVE	APPROVED SAMPLE
C48L2W36	
UL COMPONENT	CSA
FILE#	CCN#
PENDING	PENDING
CUSTOMER	DIST. SERVICES

DRAWING REVISION	REVISION BY	DATE	TOLERANCES UNLESS OTHERWISE SPECIFIED	DRAWN BY:	Regal Beloit America, Inc.
E	JHENRY		DEC. INCH mm ANGLE	JHENRY	
ECO-0165900	APPROVED BY	DATE	.XX ±0.1 [±2.5] ±0.5°	DATE:	03-24-2009
SEE ECO			.JXX ±0.02 [±0.51]	APPROVED BY:	
			.XXX ±0.005 [±0.127]	DATE:	
			.XXXX ±0.0005 [±0.0127]	REFERENCE:	
			REMOVE BURRS & BREAK SHARP EDGES .003/.015 [0.076/.381]	MATERIAL:	
			CORNER FILLETS .02 [.51]	PROCESS/FINISH	
			MACHINED SURFACES	SIZE DWG NO	STG1102A
			INCH mm	THIRD ANGLE PROJECTION	SHEET
			mm SHOWN IN BRACKETS		1