

PRODUCT INFORMATION PACKET



Model No:
Catalog No: SQG1302A
MODEL-PFHP-56FR
Induction Motors

Regal and Century are trademarks of Regal Beloit Corporation or one of its affiliated companies.
©2019 Regal Beloit Corporation, All Rights Reserved. MC017097E





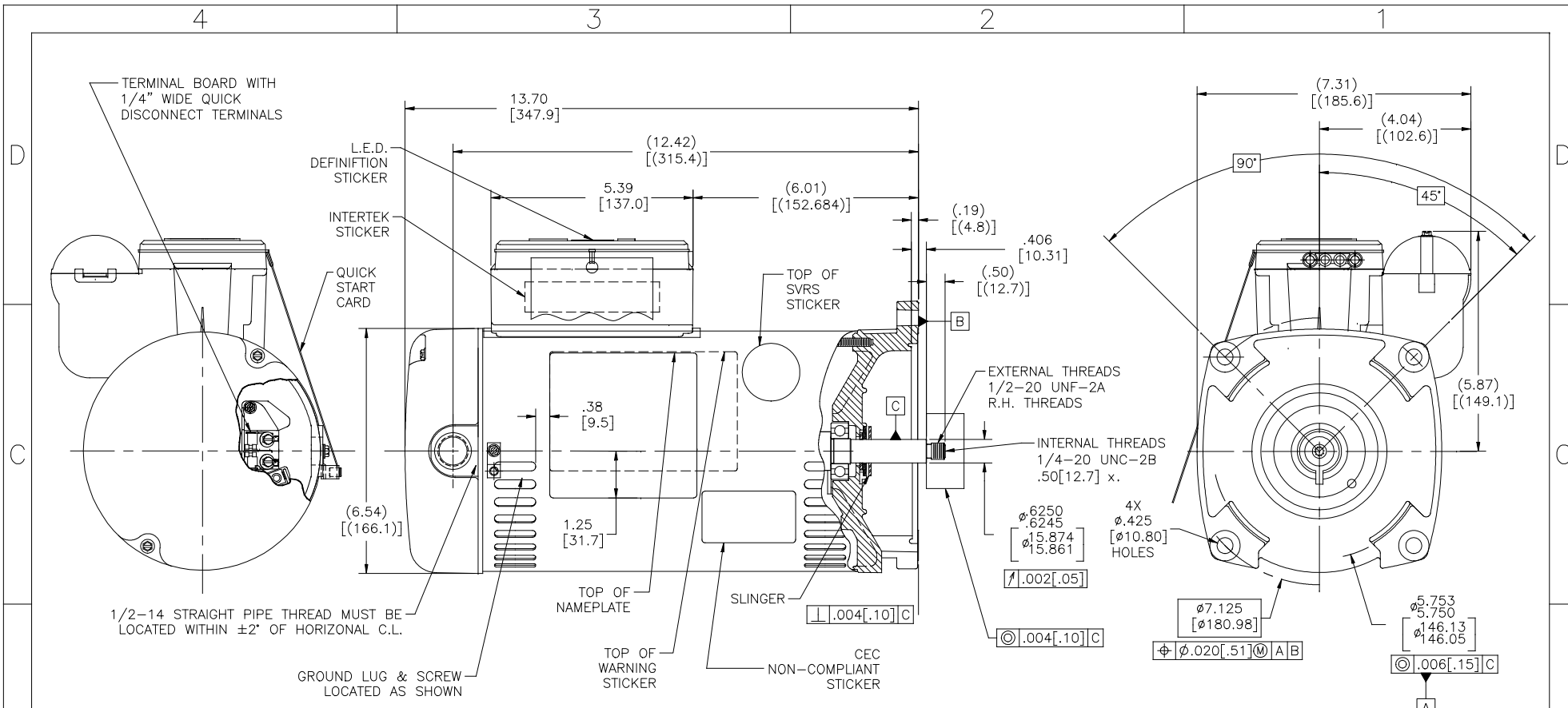
Nameplate Specifications

Output HP	3.0 HP	Output KW	2.2 kW
Frequency	60 Hz	Voltage	208-230 V
Current	MA 15.0-13.3 A	Speed	3450 RPM
Service Factor	1.15	Phase	1
Duty	Continuous	Insulation Class	B
Frame	Y56Y	Enclosure	Drip Proof
Overload Protector	Thermally Protected	Ambient Temperature	50 °C
UL	Recognized	CSA	Y

Technical Specifications

Electrical Type	Capacitor Start, Capacitor Run, Single Or Dual Poles		2
Rotation	Counterclockwise Pump End	Mounting	Square Flange
Motor Orientation	Horizontal	Drive End Bearing	BALL
Opp Drive End Bearing	BALL	Frame Material	Rolled Steel
Shaft Type	Threaded	Overall Length	14.42 in
Frame Length	10.00 in	Shaft Diameter	0.625 in
Shaft Extension	0.90 in		
Outline Drawing	SQG1302A-S01	Connection Diagram	D0000112-002

This is an uncontrolled document once printed or downloaded and is subject to change without notice. Date Created: 10/14/2019



NAMEPLATE DATA	EXTERNAL CONNECTION DIAGRAM	NOTES
MODEL: K56AA57A01 CUST PN: SQG1302A HP: 3.0 SF: 1.15 ROT: CCWPE RPM: 3450 TYPE: CP FORM: CODE: G FRAME: Y56Y VOLTS: 208-230 AMPS: MAX AMPS: 15.0-13.3 SF AMPS: - PH: 1 HZ: 60 INS: B AMB: 50°C DUTY: CONT ENCLOSURE: ODP THERMALLY PROTECTED		<ol style="list-style-type: none"> FINISH PAINT TO BE BLACK LACQUER. .44[11.2] WRENCH FLATS ON SHAFT FOR ACCESS TO THIS WRENCH FLAT REMOVE END COVER. STAINLESS STEEL SHAFT LIMITS ON AMPLITUDE OF VIBRATION MEASURED AT BEARING HOUSING=.001.

PERFORMANCE CURVE	APPROVED SAMPLE		
101101011	0603270A		
UL COMPONENT	CSA		
FILE#	CCN#	FILE#	GUIDE#
PENDING	PENDING	PENDING	PENDING
CUSTOMER	DISTRIBUTION SERVICES		

DRAWING REVISION BY: E	DATE: DEC 04-03-2009	TOLERANCES UNLESS OTHERWISE SPECIFIED: DEC. INCH mm ANGLE ±0.5°	DRAWN BY: J.HENRY	Regal Beloit America, Inc.
APPROVED BY: SEE ECO	DATE: DEC 04-03-2009	REMOVE BURRS & BREAK SHARP EDGES .003/.015 [Ø76/.381] CORNER FILLETS .02 [51] MACHINED SURFACES INCH mm THIRD ANGLE PROJECTION	APPROVED BY:	DESCRIPTION: MODEL-PFHP-56FR OUTLINE
<small>COPYRIGHT REGAL BELOIT AMERICA, INC. ALL RIGHTS RESERVED. PROPRIETARY AND CONFIDENTIAL INFORMATION - THIS DOCUMENT IS THE PROPERTY OF REGAL BELOIT AMERICA, INC. (OWNER) AND CONTAINS OWNER'S PROPRIETARY INFORMATION. ANY REPRODUCTION, COPIATION OR OTHER FIRM RECEIVING IT IS DENIED. BY RECEIVING IT, TO AGREE THAT IT, AND/OR ANY PART OF IT, SHALL NOT BE DISCLOSED TO ANY PERSON, CORPORATION OR OTHER ENTITY, EMPLOYED, AND/OR USED EXCEPT AS EXPRESSLY APPROVED IN WRITING BY OWNER. THIS DOCUMENT SHALL BE RETURNED TO OWNER UPON REQUEST. IT MAY BE SUBJECT TO CERTAIN RESTRICTIONS UNDER APPLICABLE EXPORT CONTROL LAWS AND REGULATIONS.</small>		REFERENCE: MATERIAL: PROCESS/FINISH: SIZE DWG NO: SQG1302A SHEET: 1		