

# PRODUCT INFORMATION PACKET



Model No:

Catalog No: ORM5454BU

1/8 HP, 1075 RPM, 208-230V, 48FR, CENTURY 4-IN-1 HEATMASTER ULTRA MOTOR  
Condenser Fans



Regal and Century are trademarks of Regal Beloit Corporation or one of its affiliated companies.

©2019 Regal Beloit Corporation, All Rights Reserved. MC017097E





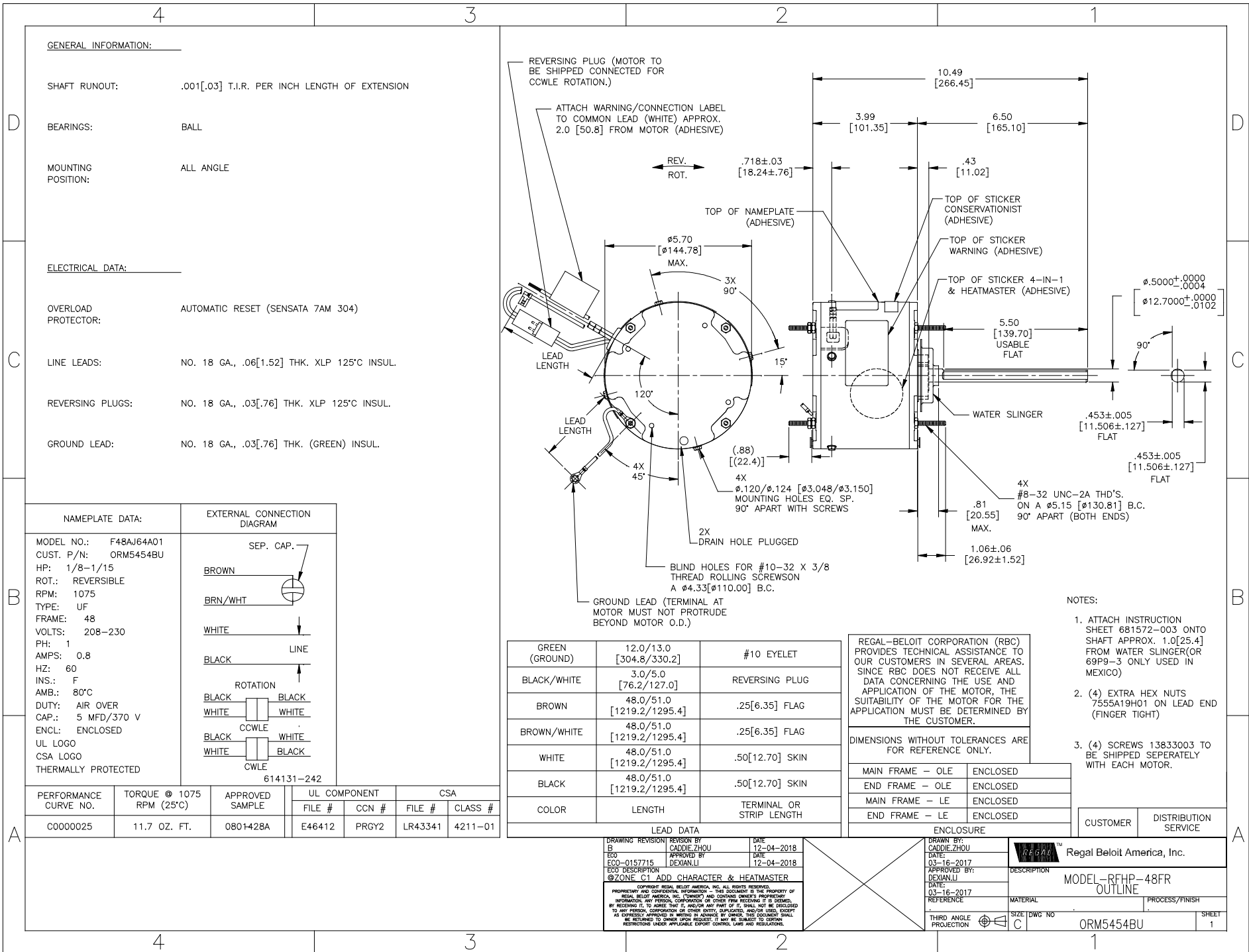
**Nameplate Specifications**

Output HP	<b>1/8-1/15 HP</b>	Output KW	<b>0.10 kW</b>
Frequency	<b>60 Hz</b>	Voltage	<b>208-230 V</b>
Current	<b>0.8 A</b>	Speed	<b>1075 RPM</b>
Service Factor	<b>1</b>	Phase	<b>1</b>
Duty	<b>Air Over</b>	Insulation Class	<b>F</b>
Frame	<b>48</b>	Enclosure	<b>Totally Enclosed</b>
Overload Protector	<b>Automatic</b>	Ambient Temperature	<b>80 °C</b>
UL	<b>Recognized</b>	CSA	<b>Y</b>
CE	<b>N</b>		

**Technical Specifications**

Electrical Type	<b>Permanent Split Capacitor</b>	Starting Method	<b>Induction Run</b>
Poles	<b>6</b>	Rotation	<b>Reversible</b>
Mounting	<b>Extended Studs</b>	Motor Orientation	<b>Any</b>
Drive End Bearing	<b>Ball</b>	Opp Drive End Bearing	<b>Ball</b>
Frame Material	<b>Rolled Steel</b>	Shaft Type	<b>Flat</b>
Overall Length	<b>11.37 in</b>	Frame Length	<b>3.38 in</b>
Shaft Diameter	<b>0.500 in</b>	Shaft Extension	<b>6.5 in</b>
Outline Drawing	<b>ORM5454BU-S01</b>	Connection Diagram	<b>614131-242</b>

**This is an uncontrolled document once printed or downloaded and is subject to change without notice. Date Created: 10/19/2019**



GENERAL INFORMATION:

SHAFT RUNOUT: .001[.03] T.I.R. PER INCH LENGTH OF EXTENSION

BEARINGS: BALL

MOUNTING POSITION: ALL ANGLE

ELECTRICAL DATA:

OVERLOAD PROTECTOR: AUTOMATIC RESET (SENSATA 7AM 304)

LINE LEADS: NO. 18 GA., .06[1.52] THK. XLP 125°C INSUL.

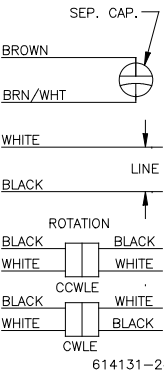
REVERSING PLUGS: NO. 18 GA., .03[.76] THK. XLP 125°C INSUL.

GROUND LEAD: NO. 18 GA., .03[.76] THK. (GREEN) INSUL.

NAMEPLATE DATA:

MODEL NO.: F48AJ64A01  
 CUST. P/N: ORM5454BU  
 HP: 1/8-1/15  
 ROT.: REVERSIBLE  
 RPM: 1075  
 TYPE: UF  
 FRAME: 48  
 VOLTS: 208-230  
 PH: 1  
 AMPS: 0.8  
 HZ: 60  
 INS.: F  
 AMB.: 80°C  
 DUTY: AIR OVER  
 CAP.: 5 MFD/370 V  
 ENCL: ENCLOSED  
 UL LOGO  
 CSA LOGO  
 THERMALLY PROTECTED

EXTERNAL CONNECTION DIAGRAM



614131-242

PERFORMANCE CURVE NO.	TORQUE @ 1075 RPM (25°C)	APPROVED SAMPLE	UL COMPONENT		CSA	
			FILE #	CCN #	FILE #	CLASS #
C0000025	11.7 OZ. FT.	0801428A	E46412	PRGY2	LR43341	4211-01

COLOR	LENGTH	TERMINAL OR STRIP LENGTH
GREEN (GROUND)	12.0/13.0 [304.8/330.2]	#10 EYELET
BLACK/WHITE	3.0/5.0 [76.2/127.0]	REVERSING PLUG
BROWN	48.0/51.0 [1219.2/1295.4]	.25[6.35] FLAG
BROWN/WHITE	48.0/51.0 [1219.2/1295.4]	.25[6.35] FLAG
WHITE	48.0/51.0 [1219.2/1295.4]	.50[12.70] SKIN
BLACK	48.0/51.0 [1219.2/1295.4]	.50[12.70] SKIN

LEAD DATA

DRAWING REVISION	REVISION BY	DATE
1	CAOJIE ZHOU	12-04-2018
2	APPROVED BY DEXIAN LI	DATE 12-04-2018

ECO-0157715  
 ECO DESCRIPTION  
 @ZONE C1 ADD CHARACTER & HEATMASTER  
 COPYRIGHT REGAL BELOIT AMERICA, INC. ALL RIGHTS RESERVED.  
 PROPRIETARY AND CONFIDENTIAL INFORMATION - THIS DOCUMENT IS THE PROPERTY OF REGAL BELOIT AMERICA, INC. ("OWNER") AND CONTAINS OWNER'S PROPRIETARY INFORMATION. ANY PERSON, CORPORATION OR OTHER ENTITY, SUPPLIER, AND/OR USER, EXCEPT BY RECEIVING IT, TO AGREE THAT IT, AND/OR ANY PART OF IT, SHALL NOT BE DISCLOSED TO ANY PERSON, CORPORATION OR OTHER ENTITY, SUPPLIER, AND/OR USER, EXCEPT AS EXPRESSLY APPROVED IN WRITING IN ADVANCE BY OWNER. USER'S OBLIGATION SHALL BE RETURNED TO OWNER UPON REQUEST. IT MAY BE SUBJECT TO EXPORT CONTROL RESTRICTIONS UNDER APPLICABLE EXPORT CONTROL LAWS AND REGULATIONS.

REGAL-BELOIT CORPORATION (RBC) PROVIDES TECHNICAL ASSISTANCE TO OUR CUSTOMERS IN SEVERAL AREAS. SINCE RBC DOES NOT RECEIVE ALL DATA CONCERNING THE USE AND APPLICATION OF THE MOTOR, THE SUITABILITY OF THE MOTOR FOR THE APPLICATION MUST BE DETERMINED BY THE CUSTOMER.

DIMENSIONS WITHOUT TOLERANCES ARE FOR REFERENCE ONLY.

MAIN FRAME - OLE	ENCLOSED
END FRAME - OLE	ENCLOSED
MAIN FRAME - LE	ENCLOSED
END FRAME - LE	ENCLOSED

ENCLOSURE

DRAWN BY: CAOJIE ZHOU	DATE: 03-16-2017
APPROVED BY: DEXIAN LI	DATE: 03-16-2017

Regal Beloit America, Inc.

DESCRIPTION: MODEL-RFHP-48FR OUTLINE

MATERIAL	PROCESS/FINISH	SHEET
SIZE DWG NO: C	ORM5454BU	1

NOTES:

- ATTACH INSTRUCTION SHEET 681572-003 ONTO SHAFT APPROX. 1.0[25.4] FROM WATER SLINGER (OR 69P9-3 ONLY USED IN MEXICO)
- (4) EXTRA HEX NUTS 7555A19H01 ON LEAD END (FINGER TIGHT)
- (4) SCREWS 13833003 TO BE SHIPPED SEPARATELY WITH EACH MOTOR.