

# PRODUCT INFORMATION PACKET



Model No:  
Catalog No: FE1036SU  
1/3 HP, 1075 RPM, 208-230V, 48FR, CENTURY HEATMASTER ULTRA MOTOR  
Condenser Fans



Regal and Century are trademarks of Regal Beloit Corporation or one of its affiliated companies.  
©2019 Regal Beloit Corporation, All Rights Reserved. MC017097E





### Nameplate Specifications

|                    |                   |                     |                         |
|--------------------|-------------------|---------------------|-------------------------|
| Output HP          | <b>1/3 HP</b>     | Output KW           | <b>0.25 kW</b>          |
| Frequency          | <b>60 Hz</b>      | Voltage             | <b>208-230 V</b>        |
| Current            | <b>2.5 A</b>      | Speed               | <b>1075 RPM</b>         |
| Service Factor     | <b>1</b>          | Phase               | <b>1</b>                |
| Duty               | <b>Air Over</b>   | Insulation Class    | <b>F</b>                |
| Frame              | <b>48</b>         | Enclosure           | <b>Totally Enclosed</b> |
| Overload Protector | <b>Automatic</b>  | Ambient Temperature | <b>80 °C</b>            |
| UL                 | <b>Recognized</b> | CSA                 | <b>Y</b>                |
| CE                 | <b>N</b>          |                     |                         |

### Technical Specifications

|                   |                                  |                       |                      |
|-------------------|----------------------------------|-----------------------|----------------------|
| Electrical Type   | <b>Permanent Split Capacitor</b> | Starting Method       | <b>Induction Run</b> |
| Poles             | <b>6</b>                         | Rotation              | <b>Reversible</b>    |
| Mounting          | <b>Extended Studs</b>            | Motor Orientation     | <b>Any</b>           |
| Drive End Bearing | <b>Ball</b>                      | Opp Drive End Bearing | <b>Ball</b>          |
| Frame Material    | <b>Rolled Steel</b>              | Shaft Type            | <b>Double Flat</b>   |
| Overall Length    | <b>12.24 in</b>                  | Frame Length          | <b>4.25 in</b>       |
| Shaft Diameter    | <b>0.500 in</b>                  | Shaft Extension       | <b>6.5 in</b>        |
| Outline Drawing   | <b>FE1036SU-S01</b>              | Connection Diagram    | <b>614131-242</b>    |

This is an uncontrolled document once printed or downloaded and is subject to change without notice. Date Created: 10/17/2019

GENERAL INFORMATION:

SHAFT RUNOUT: .001 [.03] T.I.R. PER INCH LENGTH OF EXTENSION

BEARINGS: BALL

MOUNTING POSITION: ALL ANGLE

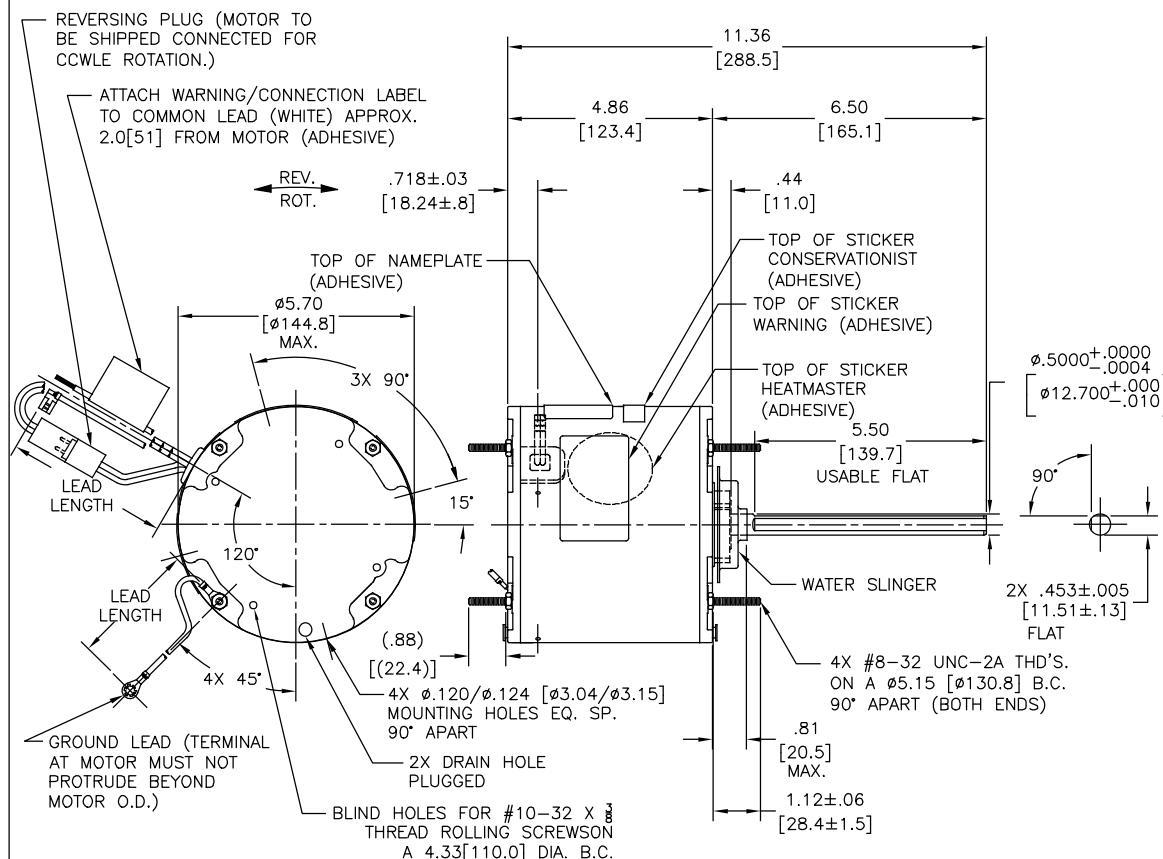
ELECTRICAL DATA:

OVERLOAD PROTECTOR: AUTOMATIC RESET (T.I. 7AM 304)

LINE LEADS: NO. 18 GA., .06 [1.5] THK. XLP 125°C INSUL.

REVERSING PLUGS: NO. 18 GA., .03 [.8] THK. XLP 125°C INSUL.

GROUND LEAD: NO. 18 GA., .03 [.8] THK. (GREEN) INSUL.



| NAMEPLATE DATA:   | EXTERNAL CONNECTION DIAGRAM   |
|---|---|
| MODEL NO.: F48AF27A01<br>CUST. P/N: FE1036SU<br>HP: 1/3<br>ROT.: REVERSIBLE<br>RPM: 1075<br>TYPE: UF<br>FRAME: 48<br>VOLTS: 208-230<br>PH: 1<br>AMPS: 2.5<br>HZ: 60<br>INS.: F<br>AMB.: 80°C<br>DUTY: AIR OVER<br>CAP.: 7.5 MFD/370 V<br>ENCL: ENCLOSED<br>UL LOGO<br>CSA LOGO<br>THERMALLY PROTECTED | SEP. CAP.<br>BROWN<br>BRN/WHT<br>WHITE<br>BLACK<br>LINE<br>ROTATION<br>BLACK BLACK<br>WHITE WHITE<br>CCWLE<br>WHITE BLACK<br>CWLE<br>614131-242 |

| PERFORMANCE CURVE NO. | TORQUE @ 1075 RPM (25°C) | APPROVED SAMPLE | UL COMPONENT FILE # | CCN # | CSA FILE # | CLASS # |
|-----------------------|--------------------------|-----------------|---------------------|-------|------------|---------|
| C32512                | 42.9 OZ. FT.             | 0500464A        | E46412              | PRGY2 | LR43341    | 4211-01 |

| COLOR          | LENGTH                | TERMINAL OR STRIP LENGTH |
|----------------|-----------------------|--------------------------|
| GREEN (GROUND) | 12.0/13.0 [305/330]   | #10 EYELET               |
| BLACK/WHITE    | 3.0/5.0 [76/127]      | REVERSING PLUG           |
| BROWN          | 48.0/51.0 [1219/1295] | .25 [6.4] FLAG           |
| BROWN/WHITE    | 48.0/51.0 [1219/1295] | .25 [6.4] FLAG           |
| WHITE          | 48.0/51.0 [1219/1295] | .50 [12.7] SKIN          |
| BLACK          | 48.0/51.0 [1219/1295] | .50 [12.7] SKIN          |

REGAL-BELOIT CORPORATION (RBC) PROVIDES TECHNICAL ASSISTANCE TO OUR CUSTOMERS IN SEVERAL AREAS. SINCE RBC DOES NOT RECEIVE ALL DATA CONCERNING THE USE AND APPLICATION OF THE MOTOR, THE SUITABILITY OF THE MOTOR FOR THE APPLICATION MUST BE DETERMINED BY THE CUSTOMER.

DIMENSIONS WITHOUT TOLERANCES ARE FOR REFERENCE ONLY.

|                  |          |
|------------------|----------|
| MAIN FRAME - OLE | ENCLOSED |
| END FRAME - OLE  | ENCLOSED |
| MAIN FRAME - LE  | ENCLOSED |
| END FRAME - LE   | ENCLOSED |

- NOTES:
- ATTACH INSTRUCTION SHEET 69P9-3 ONTO SHAFT APPROX. 1.0[25] FROM WATER SLINGER
  - 4X SCREWS 615982-001 & 4X HEX NUTS 7555A19H01 & 4X SCREWS 13833003 TO BE PUT IN A POLYBAG.

| DRAWING REVISION | REVISION BY | DATE       |
|------------------|-------------|------------|
| D                | GELINE ZHAO | 05-23-2019 |
| ECO              | KEYUN GONG  | 05-23-2019 |
| ECO-0166568      |             |            |
| SEE ECO          |             |            |

| DRAWING REVISION | REVISION BY | DATE       |
|------------------|-------------|------------|
| D                | GELINE ZHAO | 05-23-2019 |
| ECO              | KEYUN GONG  | 05-23-2019 |
| ECO-0166568      |             |            |
| SEE ECO          |             |            |

|                        |                  |                            |
|------------------------|------------------|----------------------------|
| DRAWN BY: R.ZHOU       | DATE: 01-21-2013 | Regal Beloit America, Inc. |
| APPROVED BY: T.HUANG   | DATE: 01-21-2013 |                            |
| THIRD ANGLE PROJECTION | SIZE DWG NO: C   | FE1036SU                   |
|                        |                  | SHEET 1                    |