

PRODUCT INFORMATION PACKET



Model No:
Catalog No: FE1018SU
1/6 HP,825 RPM,208-230V,48FR,CENTURY HEATMASTER ULTRA MOTOR
Condenser Fans



Regal and Century are trademarks of Regal Beloit Corporation or one of its affiliated companies.
©2019 Regal Beloit Corporation, All Rights Reserved. MC017097E





Nameplate Specifications

Output HP	1/6 HP	Output KW	0.13 kW
Frequency	60 Hz	Voltage	208-230 V
Current	1.1 A	Speed	825 RPM
Service Factor	1	Phase	1
Duty	Air Over	Insulation Class	F
Frame	48	Enclosure	Totally Enclosed
Overload Protector	Automatic	Ambient Temperature	80 °C
UL	Recognized	CSA	Y
CE	N		

Technical Specifications

Electrical Type	Permanent Split Capacitor	Starting Method	Induction Run
Poles	8	Rotation	Reversible
Mounting	Extended Studs	Motor Orientation	Any
Drive End Bearing	Ball	Opp Drive End Bearing	Ball
Frame Material	Rolled Steel	Shaft Type	Flat
Overall Length	11.49 in	Frame Length	3.50 in
Shaft Diameter	0.500 in	Shaft Extension	6.5 in
Outline Drawing	FE1018SU-S01	Connection Diagram	614131-242

This is an uncontrolled document once printed or downloaded and is subject to change without notice. Date Created: 10/17/2019

GENERAL INFORMATION:

SHAFT RUNOUT: .001 [.025] T.I.R. PER INCH LENGTH OF EXTENSION

BEARINGS: BALL

MOUNTING POSITION: ALL ANGLE

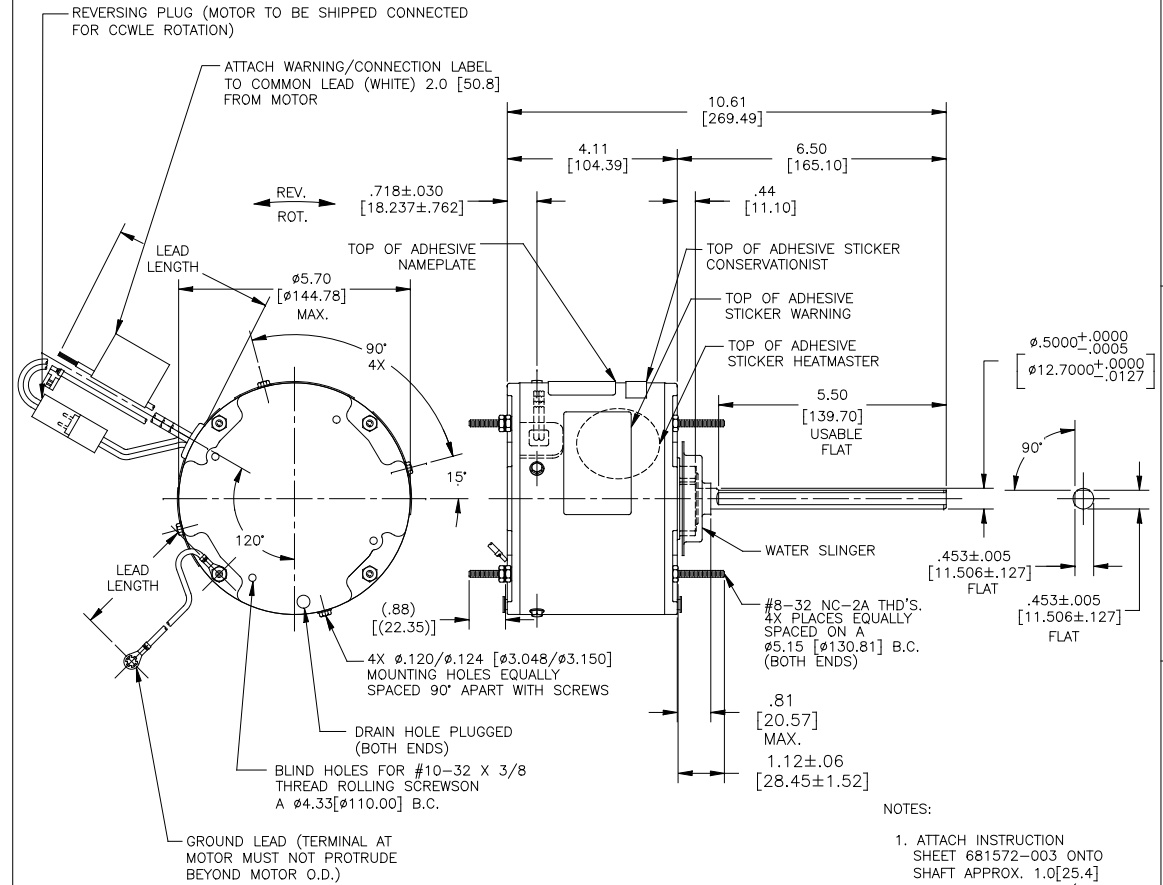
ELECTRICAL DATA:

OVERLOAD PROTECTOR: AUTOMATIC RESET (T.I. 7AM 304)

LINE LEADS: NO. 18 GA., .06 [1.52] THK. XLP 125°C INSUL.

REVERSING LEADS: NO. 18 GA., .03 [.76] THK. XLP 125°C INSUL.

GROUND LEAD: NO. 18 GA., .03 [.76] THK. (GREEN) INSUL.



- NOTES:
1. ATTACH INSTRUCTION SHEET 681572-003 ONTO SHAFT APPROX. 1.0[25.4] FROM WATER SLINGER(OR 69P9-3 ONLY USED IN MEXICO)
 2. (4) EXTRA HEX NUTS 7555A19H01 ON LEAD END (FINGER TIGHT)
 3. (4) SCREWS 13833003 TO BE SHIPPED SEPARATELY WITH EACH MOTOR.

GREEN (GROUND)	12.0/13.0 [304.8/330.2]	#10 EYELET
BLACK/WHITE	3.0/5.0 [76.2/127.0]	REVERSING PLUG
BROWN	48.0/51.0 [1219.2/1295.4]	.25 [6.35] FLAG
BROWN/WHITE	48.0/51.0 [1219.2/1295.4]	.25 [6.35] FLAG
WHITE	48.0/51.0 [1219.2/1295.4]	.50 [12.70] SKIN
BLACK	48.0/51.0 [1219.2/1295.4]	.50 [12.70] SKIN
COLOR	LENGTH	TERMINAL OR STRIP LENGTH

REGAL-BELOIT CORPORATION (RBC) PROVIDES TECHNICAL ASSISTANCE TO OUR CUSTOMERS IN SEVERAL AREAS. SINCE RBC DOES NOT RECEIVE ALL DATA CONCERNING THE USE AND APPLICATION OF THE MOTOR, THE SUITABILITY OF THE MOTOR FOR THE APPLICATION MUST BE DETERMINED BY THE CUSTOMER.

DIMENSIONS WITHOUT TOLERANCES ARE FOR REFERENCE ONLY.

MAIN FRAME - OLE	ENCLOSED
END FRAME - OLE	ENCLOSED
MAIN FRAME - LE	ENCLOSED
END FRAME - LE	ENCLOSED

CUSTOMER	DISTRIBUTION SERVICE
----------	----------------------

NAMEPLATE DATA:	EXTERNAL CONNECTION DIAGRAM
MODEL NO.: F48AJ61A01 CUST. P/N: FE1018SU HP: 1/6 ROT.: REVERSIBLE RPM: 825 TYPE: UF FRAME: 48 VOLTS: 208-230 PH: 1 AMPS: 1.1 HZ: 60 INS.: F AMB.: 80°C DUTY: AIR OVER CAP.: 5 MFD/370 V ENCL: ENCLOSED UL LOGO CSA LOGO THERMALLY PROTECTED	SEP. CAP. BROWN BRN/WHT WHITE LINE BLACK ROTATION BLACK WHITE WHITE WHITE CCWLE BLACK WHITE WHITE BLACK CWLE
614131-242	

PERFORMANCE CURVE NO.	TORQUE @825 RPM (25°C)	APPROVED SAMPLE	UL COMPONENT		CSA	
FILE #	CCN #	FILE #	CLASS #	FILE #	CLASS #	
C32577	22.2 OZ. FT.	0601193A	E46412	PRGY2	LR43341	4211-01

DRAWING REVISION	REVISION BY	DATE
A	CADDIE.ZHOU	03-17-2017
ECCO-0119125	APPROVED BY	DATE
	DEXIAN.LI	03-15-2017
ECCO DESCRIPTION NEW DRAWING		
<small>COPYRIGHT REGAL-BELOIT AMERICA, INC. ALL RIGHTS RESERVED. PROPRIETARY AND CONFIDENTIAL INFORMATION - THIS DOCUMENT IS THE PROPERTY OF REGAL-BELOIT AMERICA, INC. (OWNER) AND CONTAINS OWNER'S PROPRIETARY INFORMATION. ANY REPRODUCTION OR OTHER USE WITHOUT THE WRITTEN PERMISSION OF REGAL-BELOIT AMERICA, INC. IS STRICTLY PROHIBITED. BY RECEIVING IT, YOU AGREE THAT IT AND/OR ANY PART OF IT SHALL NOT BE DISCLOSED TO ANY PERSON, CORPORATION OR OTHER ENTITY, SUPPLIER, AND/OR USED, COPIED, REPRODUCED, TRANSMITTED, OR IN ANY MANNER MADE AVAILABLE TO ANY OTHER ENTITY WITHOUT THE WRITTEN PERMISSION OF REGAL-BELOIT AMERICA, INC. THIS DOCUMENT SHALL BE RETURNED TO OWNER UPON REQUEST. IT MAY BE SUBJECT TO CERTAIN RESTRICTIONS UNDER APPLICABLE EXPORT CONTROL LAWS AND REGULATIONS.</small>		

DRAWN BY: CADDIE.ZHOU DATE: 03-15-2017	DESCRIPTION REGAL™ Regal Beloit America, Inc.
APPROVED BY: DEXIAN.LI DATE: 03-15-2017	MODEL-RFHP-48FR OUTLINE
REFERENCE	MATERIAL
THIRD ANGLE PROJECTION	SIZE DWG NO C FE1018SU
	PROCESS/FINISH SHEET 1