

PRODUCT INFORMATION PACKET



Model No:
Catalog No: BG854A
MODEL-PFHP-56FR
Induction Motors



Regal and Century are trademarks of Regal Beloit Corporation or one of its affiliated companies.
©2019 Regal Beloit Corporation, All Rights Reserved. MC017097E





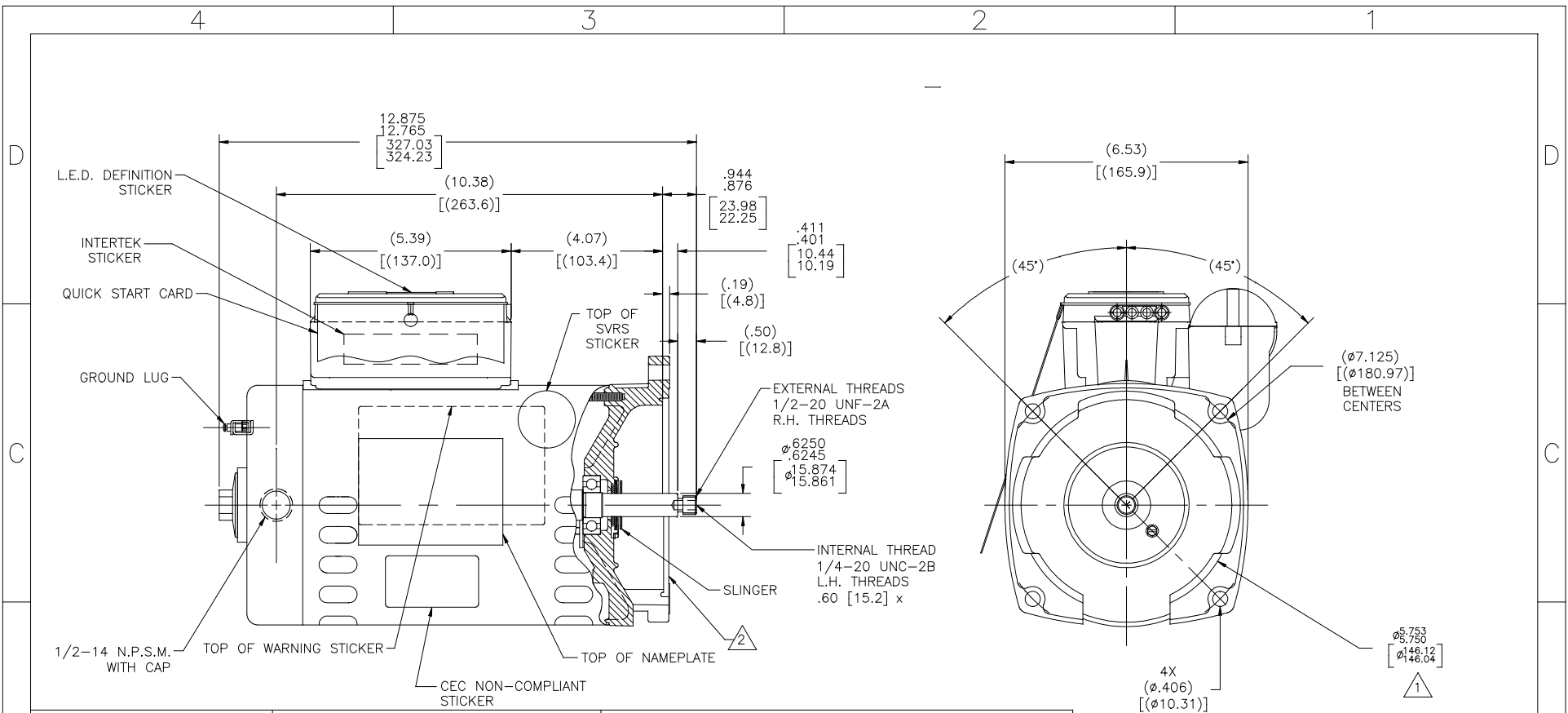
Nameplate Specifications

Output HP	1.5 HP	Output KW	1.1 kW
Frequency	60 Hz	Voltage	230/115 V
Current	SF 8.0/16.0 A	Speed	3450 RPM
Service Factor	1.1	Phase	1
Duty	Continuous	Insulation Class	B
Frame	Y56Y	Enclosure	Drip Proof
Overload Protector	Thermally Protected	Ambient Temperature	50 °C
UL	Recognized	CSA	Y

Technical Specifications

Electrical Type	Permanent Split Capacitor, Single Or Dual Voltage	Poles	2
Rotation	Counterclockwise Pump End	Mounting	Square Flange
Motor Orientation	Horizontal	Drive End Bearing	BALL
Opp Drive End Bearing	BALL	Frame Material	Rolled Steel
Shaft Type	Threaded	Overall Length	12.82 in
Frame Length	8.38 in	Shaft Diameter	0.625 in
Shaft Extension	0.944 in		
Outline Drawing	BG854A-S01	Connection Diagram	17536715.PCX

This is an uncontrolled document once printed or downloaded and is subject to change without notice. Date Created: 10/17/2019



NAMEPLATE DATA	EXTERNAL CONNECTION DIAGRAM	NOTES
MODEL: F56AA33A01 CUST PN: BG854A HP: 1.5 SF: 1.10 ROT: CCWPE RPM: 3450 TYPE: CX CODE: F FORM: FRAME: Y 56 Y VOLTS: 230/115 AMPS: MAX AMPS: SF AMPS: 8.0/16.0 PH: 1 HZ: 60 INS: B AMB: 50°C DUTY: CONT ENCLOSURE: ODP THERMALLY PROTECTED	<p>LOW VOLTAGE: BROWN - B, WHITE - A, L1 - LINE, L2 - LINE. NON-REVERSIBLE.</p> <p>HIGH VOLTAGE: WHITE - B, BROWN - A, L1 - LINE, L2 - LINE.</p>	1. PILOT DIAMETER IS CONCENTRIC WITH SHAFT CENTERLINE WITHIN .006[.15] T.I.R. 2. FACE OF MOUNTING FLANGE IS PERPENDICULAR TO SHAFT CENTERLINE WITHIN .004[.10] T.I.R. 3. SHAFT RUNOUT NOT TO EXCEED .002[.05] T.I.R. 4. FOR THREADED SHAFT EXT. MATING PARTS SHOULD BE RELIEVED ONE THREAD TO CLEAR FILLET 5. FOR THREADED SHAFT EXT. ECCENTRICITY OF THREADED PORTION OF SHAFT IS HELD WITHIN .004[.10] TOTAL GAGE READING WITH THE INDICATOR ON O.D. OF GROUND RING GAGE AS SHOWN. THE GAGE BEING STATIONARY WITH RESPECT TO THE ROTOR. 6. ENDPLAY NOT TO EXCEED .010[.25] MEASURED WITH NO THRUST 7. ALL DIMENSIONS SHOWN IN PARENTHESIS ARE REFERENCE DIMENSIONS. 8. FINISH PAINT TO BE SATIN BLACK

PERFORMANCE CURVE	APPROVED SAMPLE
16381811	
UL COMPONENT	CSA
FILE# CCN# FILE# GUIDE#	
PENDING PENDING PENDING PENDING	
CUSTOMER	DIST. SERVICES

DRAWING REVISION: F	REVISION BY: G. RODRIGUEZ	DATE: 04-25-2019	TOLERANCES UNLESS OTHERWISE SPECIFIED	DRAWN BY: KHR	Regal Beloit America, Inc.
ECO-0165900	APPROVED BY: G. RODRIGUEZ	DATE: 04-25-2019	DEC. INCH mm ANGLE	DATE: 03-16-2009	
SEE ECO			X ±0.1 ±2.53 ±0.5	APPROVED BY:	DESCRIPTION: MODEL-PFHP-56FR
			.XX ±0.02 ±0.511	DATE:	OUTLINE
			.XXX ±0.005 ±0.1271	REFERENCE:	MATERIAL: PROCESS/FINISH:
			.XXXX ±0.0005 ±0.01271	THIRD ANGLE PROJECTION	SIZE DWG NO: BG854A
			REMOVE BURRS & BREAK SHARP EDGES .003/.015 [076/381]		SHEET: 1
			CORNER FILLETS .02 [51]		
			MACHINED SURFACES INCH mm		
			mm SHOWN IN [BRACKETS]		