

# PRODUCT INFORMATION PACKET



Model No:  
Catalog No: BG853A  
MODEL-PFHP-56FR  
Induction Motors



Regal and Century are trademarks of Regal Beloit Corporation or one of its affiliated companies.  
©2019 Regal Beloit Corporation, All Rights Reserved. MC017097E





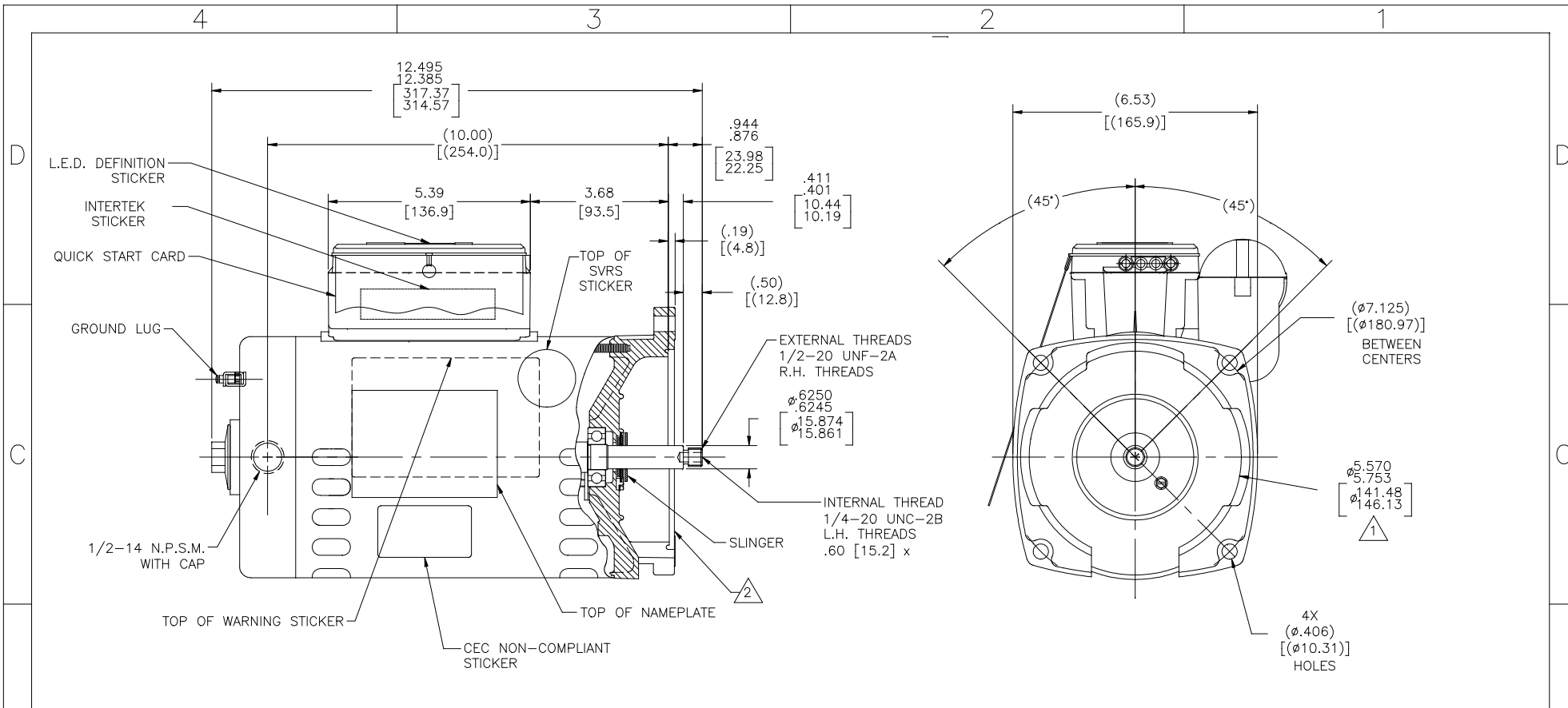
**Nameplate Specifications**

Output HP	<b>1.0 HP</b>	Output KW	<b>0.75 kW</b>
Frequency	<b>60 Hz</b>	Voltage	<b>230/115 V</b>
Current	<b>SF 7.1/14.2 A</b>	Speed	<b>3450 RPM</b>
Service Factor	<b>1.25</b>	Phase	<b>1</b>
Duty	<b>Continuous</b>	Insulation Class	<b>B</b>
Frame	<b>P56Y</b>	Enclosure	<b>Drip Proof</b>
Overload Protector	<b>Thermally Protected</b>	Ambient Temperature	<b>50 °C</b>
UL	<b>Recognized</b>	CSA	<b>Y</b>

**Technical Specifications**

Electrical Type	<b>Permanent Split Capacitor, Single Or Dual Voltage</b>	Poles	<b>2</b>
Rotation	<b>Counterclockwise Pump End</b>	Mounting	<b>Square Flange</b>
Motor Orientation	<b>Horizontal</b>	Drive End Bearing	<b>BALL</b>
Opp Drive End Bearing	<b>BALL</b>	Frame Material	<b>Rolled Steel</b>
Shaft Type	<b>Threaded</b>	Overall Length	<b>12.44 in</b>
Frame Length	<b>8.00 in</b>	Shaft Diameter	<b>0.625 in</b>
Shaft Extension	<b>0.9444 in</b>		
Outline Drawing	<b>BG853A-S01</b>	Connection Diagram	<b>17536715.PCX</b>

**This is an uncontrolled document once printed or downloaded and is subject to change without notice. Date Created: 10/19/2019**



NAMEPLATE DATA	EXTERNAL CONNECTION DIAGRAM	NOTES
MODEL: F56AA32A01 CUST. PN: BG853A HP: 1.0 SF: 1.25 ROT: CCWPE RPM: 3450 TYPE: CX FORM: CODE: J FRAME: P 56 Y VOLTS: 230/115 AMPS: L1 LINE MAX AMPS: L2 LINE SF AMPS: 7.1/14.2 PH: 1 HZ: 60 INS: B AMB: 50°C DUTY: CONT ENCLOSURE: ODP THERMALLY PROTECTED		1. PILOT DIAMETER IS CONCENTRIC WITH SHAFT CENTERLINE WITHIN .006[.15] T.I.R. 2. FACE OF MOUNTING FLANGE IS PERPENDICULAR TO SHAFT CENTERLINE WITHIN .004[.10] T.I.R. 3. SHAFT RUNOUT NOT TO EXCEED .002[.05] T.I.R. 4. FOR THREADED SHAFT EXT. MATING PARTS SHOULD BE RELIEVED ONE THREAD TO CLEAR FILLET 5. FOR THREADED SHAFT EXT. ECCENTRICITY OF THREADED PORTION OF SHAFT IS HELD WITHIN .004[.10] TOTAL GAGE READING WITH THE INDICATOR ON O.D. OF GROUND RING GAGE AS SHOWN. THE GAGE BEING STATIONARY WITH RESPECT TO THE ROTOR. 6. ENDPLAY NOT TO EXCEED .010[.25] MEASURED WITH NO THRUST 7. ALL DIMENSIONS SHOWN IN PARENTHESIS ARE REFERENCE DIMENSIONS. 8. FINISH PAINT TO BE SATIN BLACK

PERFORMANCE CURVE	APPROVED SAMPLE		
16381911			
UL COMPONENT	CSA		
FILE#	CCN#	FILE#	GUIDE#
PENDING	PENDING	PENDING	PENDING
CUSTOMER	DIST. SERVICES		

DRAWING REVISION BY C G. RODRIGUEZ	DATE 04-25-2019	TOLERANCES UNLESS OTHERWISE SPECIFIED DEC. INCH mm ANGLE X ±0.1 [±2.5] ±0.5° XX ±0.02 [±0.51] XXX ±0.005 [±0.127] XXXX ±0.0005 [±0.0127]	DRAWN BY: JHENRY	Regal Beloit America, Inc.
APPROVED BY G. RODRIGUEZ	DATE 04-25-2019	REMOVE BURRS & BREAK SHARP EDGES .003/.015 [0.076/.381] X 45° CORNER FILLETS R.02 [51] MACHINED SURFACES INCH mm 25/100 mm SHOWN IN BRACKETS	DATE: 03-16-09	DESCRIPTION OUTLINE
ECD DESCRIPTION SEE ECO			APPROVED BY:	
			DATE:	
			REFERENCE:	
			MATERIAL:	
			PROCESS/FINISH	
			THIRD ANGLE PROJECTION	
			SIZE DWG NO	BG853A
			SHEET	1