



KOP-FLEX® COUPLING RECERTIFICATION



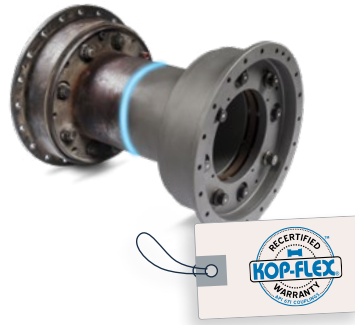
Kop-Flex high performance couplings are engineered and applied based on the API 671 guidelines and are designed to last for the life of the connected equipment. However, operating equipment beyond the design limits may shorten their effective service life. This may be a result of a higher number of starts due to less frequent turnarounds, or increased misalignment while in operation.

Kop-Flex coupling recertification resets the damage accumulation the coupling has endured while operating under severe loading conditions through the replacement of the flexible elements, in the case of disc couplings, and hardware. As part of an effective proactive maintenance strategy, Kop-Flex coupling recertification restores your coupling to a like new condition for about half the cost of a replacement and can help ensure the reliable operation of your critical rotating equipment.

KOP-FLEX® COUPLING RECERTIFICATION

REGAL CAN RECERTIFY KOP-FLEX® COUPLINGS BACK TO API 671 OR OTHER INDUSTRY STANDARDS

- Comprehensive mechanical/metallurgical inspection
- Provide evaluation report with detailed findings confirming the value of the recertification
- Update design to current standards
- Glass bead blast cleaning, hand polishing
- Replacement of flexible elements (disc packs) where applicable
- Replacement of ALL hardware; shims, bolts, nuts, washers
- Re-balance to original specifications
- Package in custom wooden crate; long term storage protection options available.



mechanical inspection



MPI inspection



glass bead blast cleaning



re-balance



Locations of Repair Facilities

*Authorized Service Partner.

KOP-FLEX®

Regal Beloit America, Inc.

7120 New Buffington Road

Florence, KY 41042

Customer Service: 800-626-2120

Fax: 800-262-3292

Technical Service: 800-626-2093

www.regalbeloit.com

APPLICATION CONSIDERATIONS

The proper selection and application of products and components, including the related area of product safety, is the responsibility of the customer. Operating and performance requirements and potential associated issues will vary appreciably depending upon the use and application of such products and components. The scope of the technical and application information included in this publication is necessarily limited. Unusual operating environments and conditions, lubrication requirements, loading supports, and other factors can materially affect the application and operating results of the products and components and the customer should carefully review its requirements. Any technical advice or review furnished by Regal Beloit America, Inc. and/or its affiliates ("Regal") with respect to the use of products and components is given in good faith and without charge, and Regal assumes no obligation or liability for the advice given, or results obtained, all such advice and review being given and accepted at customer's risk.

For a copy of our Standard Terms and Conditions of Sale, please visit <https://www.regalbeloit.com/Terms-and-Conditions-of-Sale>. These terms and conditions of sale, disclaimers and limitations of liability apply to any person who may buy, acquire or use a Regal product referred to herein, including any person who buys from a licensed distributor of these branded products.

Regal and Kop-Flex are trademarks of Regal Beloit Corporation or one of its affiliated companies.

©2015, 2018 Regal Beloit Corporation, All Rights Reserved. MCSSP18021E • Form# 9899E

REGAL®