

Optional End Cap
(order separately)

SEALMASTER® MATERIAL HANDLING MOUNTED BALL BEARINGS

NOW DESIGNED FOR COMMERCIAL TOLERANCE SHAFTING FOR IMPROVED LOCK RELIABILITY

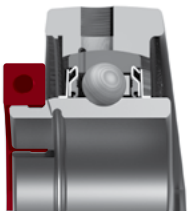
Sealmaster material handling mounted ball bearings feature cast iron housings and an extended inner race insert bearing with nylon retainer. The insert features a rivet to help prevent outer ring rotation and is available with setscrew or SKWEZLOC® concentric locking collar designed for commercial tolerance shafting and optional snap on end cap. The contact seal, with black oxide treated flinger, provides a good balance between contaminant resistance, grease loss and friction. These bearings are available in common unit material handling industry bore sizes and housing configurations.

Shaft sizes (series): 1 7/16" (23),
1 11/16" (31) and 2 7/16" (39)



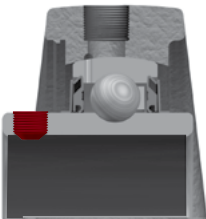
SHAFT DIAMETER	SETScrew AND OLD SKWEZLOC TOLERANCE RANGE	SKWEZLOC UPGRADED TOLERANCE RANGE (COMMERCIAL SHAFTING)
1/2" to 2"	+ .0000 / - .0005"	+ .000 / - .003"
2 1/8" to 2 7/16"t	+ .0000 / - .0010"	+ .000 / - .004"

FEATURES AND BENEFITS



MULTIPLE LOCKING METHODS SKWEZLOC® CONCENTRIC LOCKING COLLAR

The Skwezloc concentric locking collar clamp with an innovative circumferential groove on the inner ring bore is designed for use on "Commercial" grade Turned & Polished (T&P) and Turned, Ground & Polished (TG&P) shaft tolerances. The result is a near perfect concentricity of the shaft to bearing, improved shaft grip versus standard and competitive designs, and ball path roundness, while reducing fretting corrosion. This design eliminates the shaft damage of setscrew locking and minimizes bearing induced vibration for smoother, quieter operation. The collar has a TORX Plus®* head cap screw that outlasts stripping 12 times longer than hex head cap screws.



SETScrew LOCKING

120° spaced, balanced three point contact minimizes inner ring distortion vibration, reduces noise, and improves reliability. Precision manufactured diamond faceted setscrews contribute to improved clamping and resistance to back out.



SEALING

Positive contact molded nitrile rubber contact seal with an auxiliary flinger element standard. The contact seal allows grease purge and helps keep contamination out of the bearing while the flinger provides a rotating shield that directs contamination away from the seal.



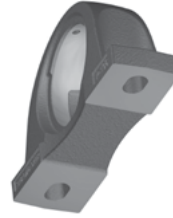
SEALED FOR LIFE

The Sealmaster® material handling bearings are supplied with a plug in the housing and are "sealed for life." A standard lubrication fitting is supplied loose in the box if relubrication is desired.



ANTI-ROTATION RIVET

An anti-rotation rivet prevents outer ring creep, or rotation, within the housing.



SOLID CAST IRON BASE

Solid bases are standard on Sealmaster® material handling ball bearing pillow blocks. The solid base provides improved stability, resistance to shock and vibration and prevents frame buckling under base compared to semi-solid and hollow mounting bases.



ZONE HARDENED INNER RACE

Sealmaster® bearings undergo a unique heat treat process that hardens the inner race only where it is needed...under the ball path. The zone hardened inner race results in improved lock reliability as a result of less distortion at setscrew location and improved thread conformity resulting in improved clamping and resistance to setscrew back-out.



END CAPS

The Sealmaster® material handling bearing housings are machined to accept an optional safety yellow polymer snap on end cap to cover rotating shafts, allowing users to better conform to OSHA requirements for personal protection from rotating shafts. The end cap can easily snap into the housing without the need for special tooling.



SEALMASTER®

Regal Beloit America, Inc.
7120 New Buffington Road
Florence, KY 41042

Customer Service: 800-626-2120

Fax: 800-262-3292

Technical Service: 800-626-2093

www.regalbeloit.com



NAMEPLATE

A metal nameplate riveted to the housing allows for easy identification even after years of operation.

APPLICATION CONSIDERATIONS

The proper selection and application of products and components, including the related area of product safety, is the responsibility of the customer. Operating and performance requirements and potential associated issues will vary appreciably depending upon the use and application of such products and components. The scope of the technical and application information included in this publication is necessarily limited. Unusual operating environments and conditions, lubrication requirements, loading supports, and other factors can materially affect the application and operating results of the products and components and the customer should carefully review its requirements. Any technical advice or review furnished by Regal Beloit America, Inc. and/or its affiliates ("Regal") with respect to the use of products and components is given in good faith and without charge, and Regal assumes no obligation or liability for the advice given, or results obtained, all such advice and review being given and accepted at customer's risk.

For a copy of our Standard Terms and Conditions of Sale, please visit <https://www.regalbeloit.com/Terms-and-Conditions-of-Sale>. These terms and conditions of sale, disclaimers and limitations of liability apply to any person who may buy, acquire or use a Regal product referred to herein, including any person who buys from a licensed distributor of these branded products.

Torx and Torx Plus are believed to be the trademarks or trade names of Acument Intellectual Properties, LLC and are not owned or controlled by Regal Beloit Corporation.

Regal, Sealmaster and Skwezloc are trademarks of Regal Beloit Corporation or one of its affiliated companies.

©2015, 2018 Regal Beloit Corporation, All Rights Reserved. MCSSP18061E • Form# 9348E

REGAL®